



CROWN IMPERIAL ASSEMBLY INSTRUCTIONS

Tall Appliance Housing (2120mm)

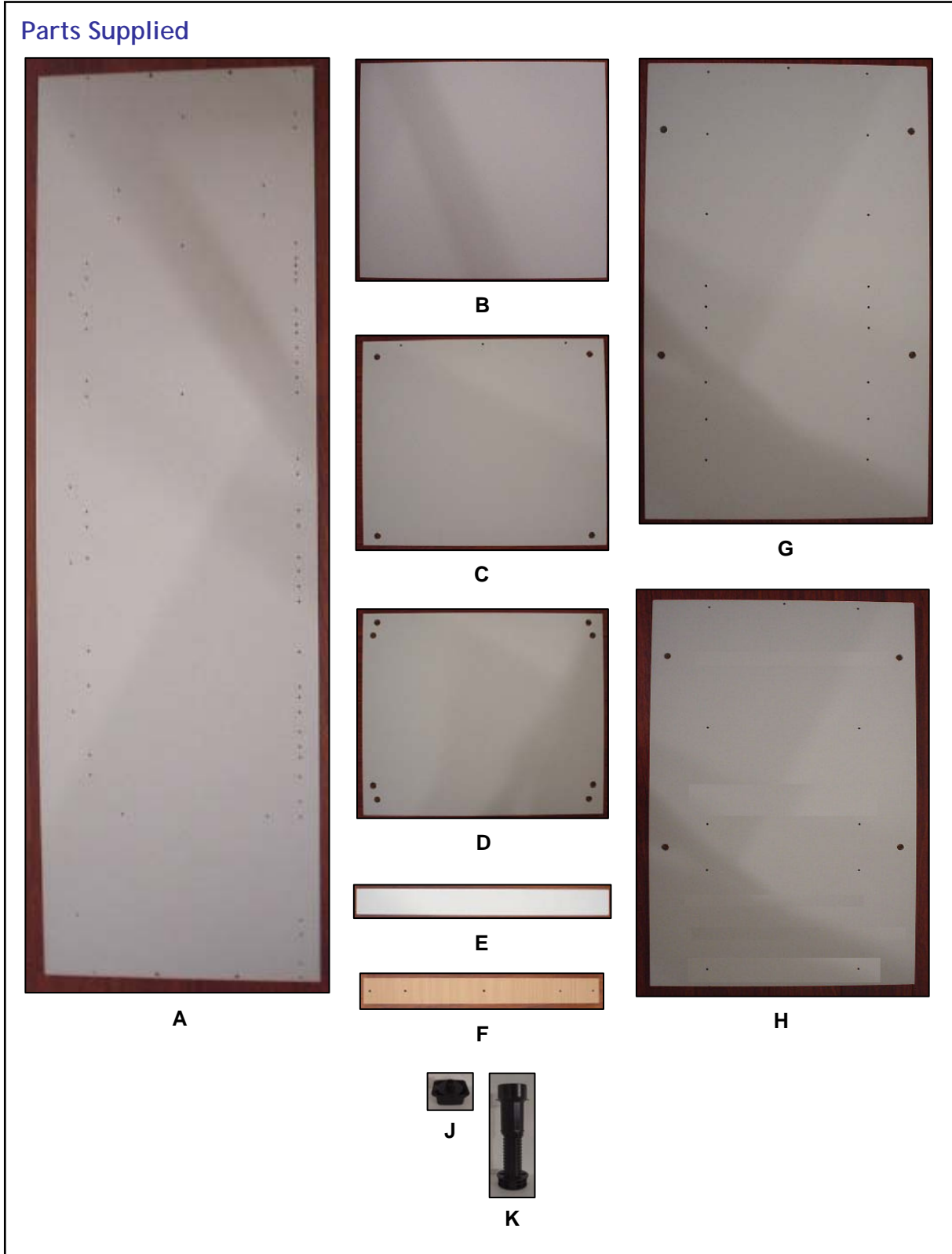


CROWN IMPERIAL ASSEMBLY INSTRUCTIONS

Tall Appliance Housing (2120mm)

Tall Appliance Parts

Parts Supplied





CROWN IMPERIAL ASSEMBLY INSTRUCTIONS

Tall Appliance Housing (2120mm)

Part Letter	Part Name	Quantity
A	End Panel*	2
B	Loose Shelf	1
C	Fixed Shelf	3
D	Top/Bottom Panel	2
E	Front Rail	1
F	Support Rail	2
G	Large Back	2
H	Small Back	1
J	Feet Block	4
K	Adjustable Feet	4

** NOTE: End Panels are packed separately to all other parts supplied.*



CROWN IMPERIAL ASSEMBLY INSTRUCTIONS

Tall Appliance Housing (2120mm)

A 	B 	C 	D 	E
F 	G 	H 	J 	K
L 	M 	N 	P 	Q
R 	S 	T 	U 	
V 	X 		Y 	
W 				



CROWN IMPERIAL ASSEMBLY INSTRUCTIONS

Tall Appliance Housing (2120mm)

Fitting Letter	Fitting Name	Quantity
A	Metal Dowel	30
B	Metal Cam	30
C	Wooden Dowel 8 x 40mm	8
D	Wooden Dowel 5 x 25mm	4
E	Connecting Screws (M/F)	3 pairs
F	Black Chipboard Screw 8 x 45mm	15
G	Countersunk Screw 8 x 1 ¼"	6
H	Countersunk Screw 6 x 5/8"	8
J	Countersunk Screw 6 x ½"	
K	Flange Head Screw 6 x ¾"	
L	Flange Head Screw 6 x 5/8"	
M	Euro Screw 6 x 11mm	4
N	Round Head Screw 6 x 5/8"	4
P	Shelf Stud	8
Q	Rubber Sleeved Shelf Stud	
R	Angle Bracket	
S	Door Buffer Pad	8
T	5mm Plugs	50
U	35mm Bung	
V	Crown Conceal Cap	
W	Hanging Plate	
X	Plinth Clip	2
Y	Peg-o-Lock	



CROWN IMPERIAL ASSEMBLY INSTRUCTIONS

Tall Appliance Housing (2120mm)

Assembly Instructions

Assembly Option Choices

Decide which aperture size(s) you require, and then select the appropriate combination from those listed. Please note certain combinations can either have two 283 drawers, or a 570 door, at the bottom.

***** All the following images will use 2120mm Option 2 as an example *****

Therefore please ensure that you put the fittings and panels together relative to the option that you have chosen. For alternative appliance combinations please refer to page 15.



CROWN IMPERIAL ASSEMBLY INSTRUCTIONS

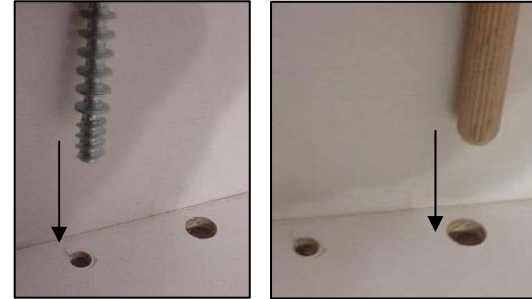
Tall Appliance Housing (2120mm)

Step 1. Insert fittings into End Panels

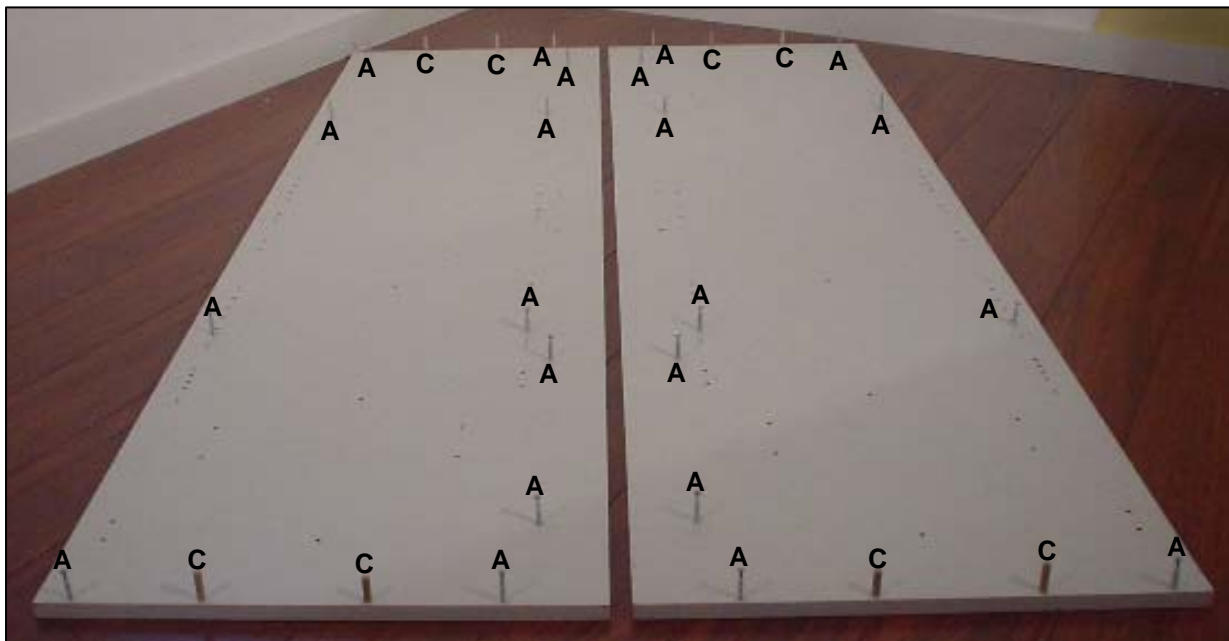
Insert Metal Dowels (fitting A) and Wooden Dowels (fitting C) into the end panel, as shown.

NOTE: The end panels supplied are **not** Universal, there is a distinct Left hand panel and a distinct Right hand panel.

1.1. Insert fittings A and C



1.2. Positions of fittings A and C on End Panels





CROWN IMPERIAL ASSEMBLY INSTRUCTIONS

Tall Appliance Housing (2120mm)

Step 2. Top/Bottom Panel and Fixed Shelf

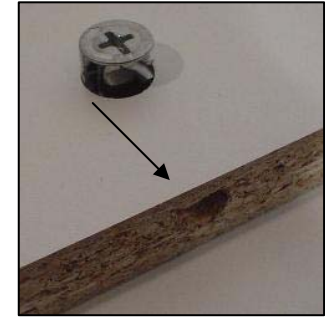
Insert the Circular Cams (fitting B) into the holes in the top panel.

Ensure the arrows on the circular cams, are pointing outwards, towards the pre-drilled edge.

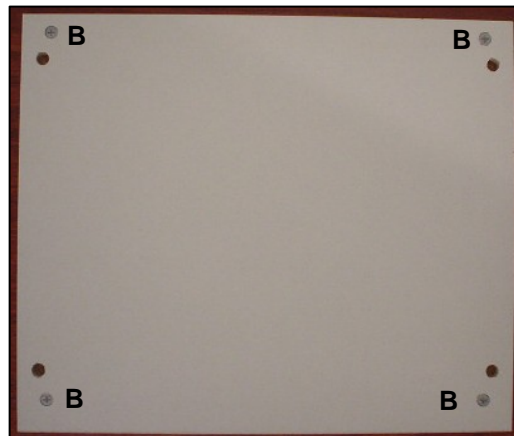
Repeat for the fixed shelving and bottom panel.

NOTE: Fixed Shelves is identified by three 5mm diameter through holes, along the front edge.

2.1. Insert fitting B



2.2. Position of fitting B in Top/Bottom Panel



Step 3. Fit Top/Bottom Panels and Fixed Shelf

Step 3.1

Take the top panel and push firmly home onto the end panel, as shown.

Ensure the cams are facing outwards.

3.1. Fit Top Panel to End Panel





CROWN IMPERIAL ASSEMBLY INSTRUCTIONS

Tall Appliance Housing (2120mm)

Step 3.2

Using a screwdriver, turn the circular cam clockwise to lock.

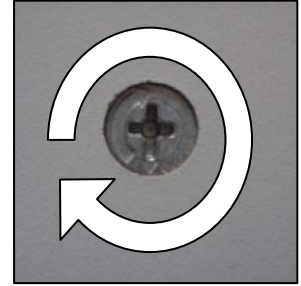
Repeat for all cams.

Step 3.3

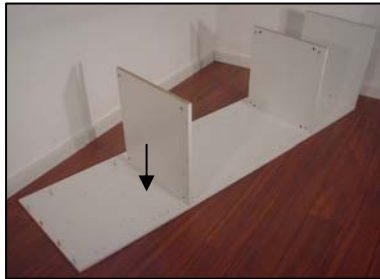
Repeat the above, to fit the fixed shelves and bottom panel.

Ensure all cams are facing downwards.

3.2. Lock Cams to secure



3.3. Repeat to fit all Fixed Shelving and the Bottom Panel



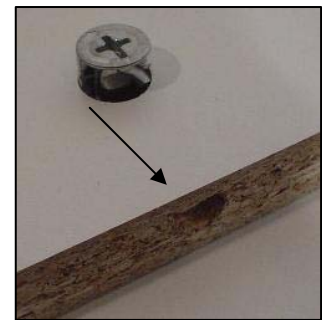
Step 4. Back Panels

Insert the Circular Cams (fitting B) into the holes in the back panel.

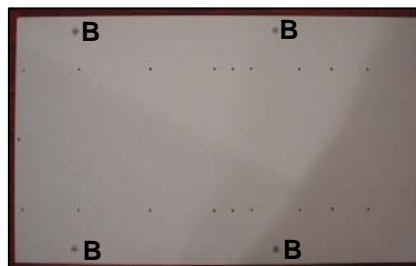
Ensure the arrows on the circular cams, are pointing outwards, towards the pre-drilled edge.

Repeat for the remaining back panel.

4.1. Insert fitting B



6.2. Position of fitting B in Back Panel





CROWN IMPERIAL ASSEMBLY INSTRUCTIONS

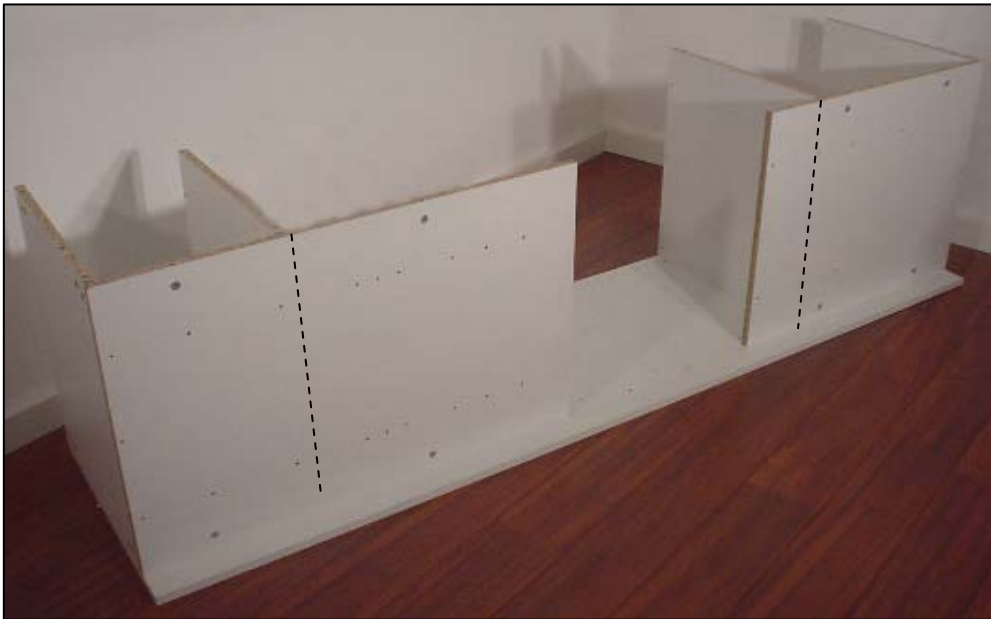
Tall Appliance Housing (2120mm)

Step 5. Cut Back Panels

For Appliance Housings, the smaller back panels, are placed at the bottom of the Unit. However all panels need to be modified prior to assembly.

Push the back panels into place, and mark each back panels for length. Once marked, remove the back panels and cut them to size.

5. Fit Back Panel, Mark length required, Remove, and Cut



Step 6. Fit Newly Cut Back Panels

Step 6.1

Take the first back panel and push firmly home onto the end panel, as shown.

Ensure the cams are facing outwards.

6.1. Fit first Back Panel to End Panel





CROWN IMPERIAL ASSEMBLY INSTRUCTIONS

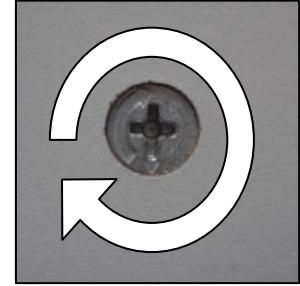
Tall Appliance Housing (2120mm)

Step 6.2

Using a screwdriver, turn the circular cam clockwise to lock.

Repeat for all cams.

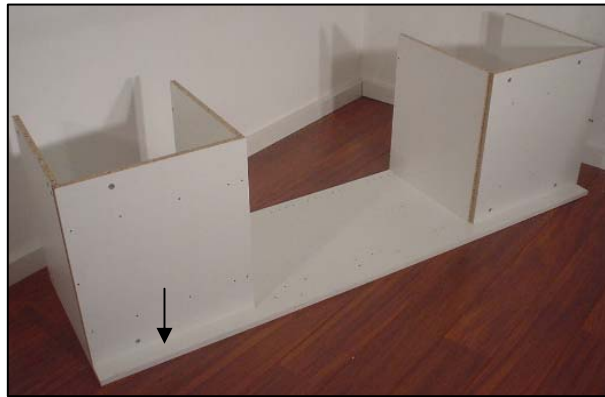
6.2. Lock Cams to secure



Step 6.3

Repeat the above, to fit the remaining back panel.

6.3. Fit remaining Back Panel



Step 7. Secure both Back Panels

Secure both back panels using two screws (fitting F), as shown.

7. Secure both Back Panels





CROWN IMPERIAL ASSEMBLY INSTRUCTIONS

Tall Appliance Housing (2120mm)

Step 8. End Panel

Place the right hand End Panel over the assembly and push home.

Lock all cams.

8. Fit remaining End Panel





CROWN IMPERIAL ASSEMBLY INSTRUCTIONS

Tall Appliance Housing (2120mm)

Step 9. Support Rail

Step 9.1. Fit Support Rail to End Panel

If the option you have chosen requires a Support Rail, insert two small wooden dowels (fitting D) into the End Panel, just under the fixed shelf.

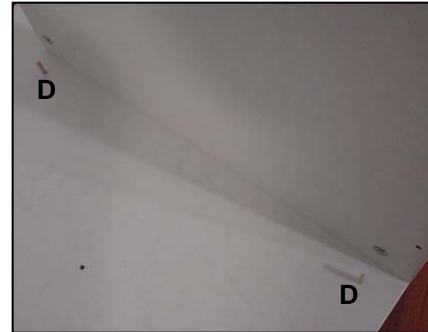
Align the holes shown on the support rail, with the dowels on the end panel, and push the support rail onto these dowels.

Step 9.2. Secure Support Rail

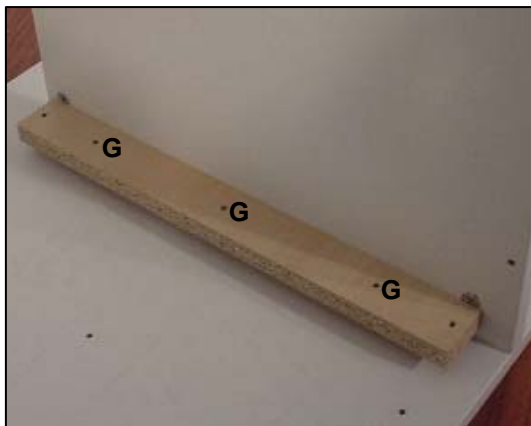
Secure the support rail using three screws (fitting G).

NOTE: The support rail will NOT go all the way to the front edge.

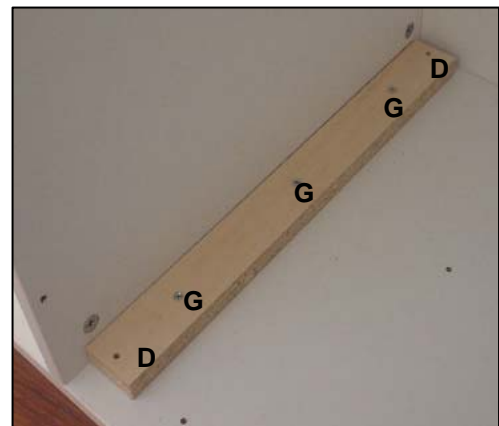
9.1. Position of fitting D in Support Rail



9.2. Secure Support Rail with fitting G



9.3 Fit remaining Support Rail



Step 9.3

Fit the remaining support rail, as shown.



CROWN IMPERIAL ASSEMBLY INSTRUCTIONS

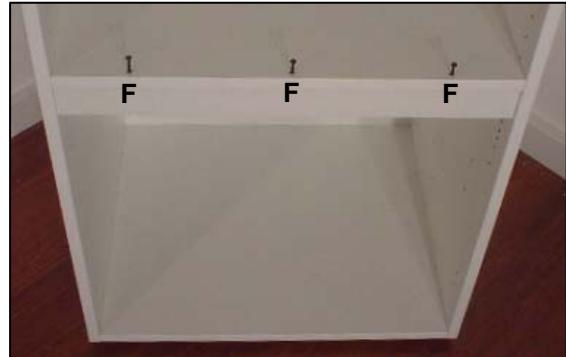
Tall Appliance Housing (2120mm)

Step 10. Front Rail

Fit the Front Rail to the bottom of the fixed shelf as shown. This should sit adjacent to the support rails fitted earlier.

Secure using three screws (fitting F).

10. Secure Front Rail to Fixed Shelf

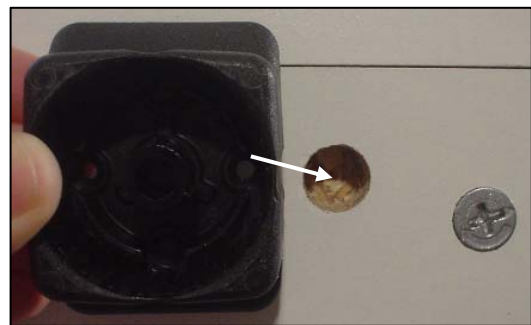


Step 11. Fitting Feet

Step 11.1 Attaching the Feet Blocks

On the bottom panel of the cabinet, locate the feet blocks with the flange facing the edge of the cabinet and push home.

11.1 Fix in Feet Blocks



Step 11.2 Securing Feet Blocks

To secure the feet blocks, hit the spigots 'X' with a hammer, as shown, taking care not to damage the surround.

Using two countersunk screws (fitting H), per block, secure further.

11.2 Secure Feet Blocks





CROWN IMPERIAL ASSEMBLY INSTRUCTIONS

Tall Appliance Housing (2120mm)

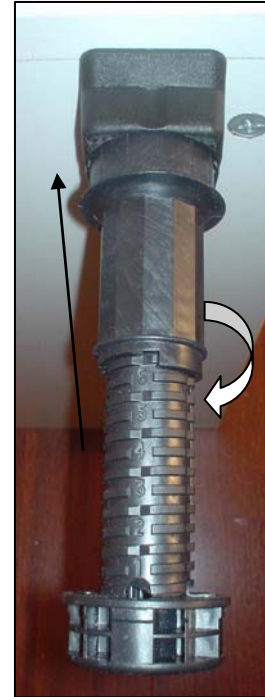
Step 11.3 Push Feet into Feet Blocks

Push the adjustable feet, into the feet blocks. Adjust the height of the feet by turning them.

There is a sequence of numbers written on the feet to aid adjusting all feet to the same height.

Repeat for all four feet.

11.3 Fit Feet and Adjust Height



Step 12. Shelving

NOTE: Shelving is optional.

When the cabinet is installed, position shelves accordingly. Using four shelf studs (fitting N) position the shelf at the height desired.

Repeat this, if extra shelving is required.



CROWN IMPERIAL ASSEMBLY INSTRUCTIONS

Tall Appliance Housing (2120mm)

Complete Tall Appliance Housing (2120mm)

